

FRANKIA TITAN 2024 ON A FIAT DUCATO PLATFORM WITH AL-KO LOW-FRAME

EXPERIENCE THE TITAN



FRANKIA



Strong stance

Every FRANKIA TITAN is unique, but they are all driven by the same goal: To give you independence on the road and create your own personal comfort zone. There are no compromises here: This motorhome is designed for maximum driving pleasure and features a unique technology package with a luxurious interior. Everything is based on the highest standards of quality, style and equipment.

Travelling with the TITAN	2-3
Fiat expertise	4-5
Living	6-11
Kitchen	12-13
Sleeping	14-15
Spa-like bathroom	16-17
TITAN features at a glance	18-19
Technology	20-21
TITAN NEXT	22-25
Standard equipment	26-29
Floor plans	30-31

FOR EVERYONE WHO WANTS TO ENJOY
FREEDOM AND SELF-SUFFICIENCY
ON A FIAT DUCATO PLATFORM!



Fiat driving at its finest: Drive in style with the FRANKIA TITAN!
The car-like exterior design exudes exclusivity and makes a bold statement.

A strong partnership

What makes Fiat and FRANKIA such a perfect team? Whether one-of-a-kind double floor or maximum driving pleasure: The powerful Fiat Ducato with an AL-KO low-frame is the perfect basis for us to create exceptional motorhomes that satisfy your unique needs and wishes.



Versatility and individuality on a Fiat Ducato platform with an AL-KO low-frame.
The new TITAN NEXT, F-Line I 680 PLUS, F-Line I 740 GD and the F-Line A 740 PLUS (left to right)

DEVELOPMENT PARTNERS
FOR OVER 37 YEARS



The image shows the interior of a motorhome. The upper half features light-colored wood paneling on the walls and ceiling, with recessed LED lighting strips. A large window is visible on the right. The lower half shows a white countertop with a chrome faucet, a cutting board with lemons, and a glass vase with a plant. In the background, there are orange leather seats and a steering wheel.

A clear statement

The FRANKIA TITAN 890 I doesn't hide its grandeur. Why think small when you can get this much comfort? The luxury liner exceeds all standards with its bar-style seating featuring a multimedia workspace - and offers nearly 9 m of pure luxury, 2.03 m of headroom throughout and 2.10 m long XL separate beds or a 1.60 m wide queen-size bed.







Individualistic

Trends come and go. Real style is timeless and shows personality. FRANKIA TITAN understands this. Sophisticated materials are used inside the vehicle to create pure elegance, fresh contrasts and light-flooded spaces for your enjoyment. The stepless interior in this luxury liner boasts 2.03 m of head-room for unique, loft-like charm.





Charismatic

Why stay and travel in tight quarters when maximum comfort awaits you? The FRANKIA I 840 QD TITAN is full of space and luxury. The large L-shaped seating group and the 1.60 m wide queen-size bed make your living space feel like a suite.



Indulgent

Holidays mean freedom. The freedom to do anything or nothing at all. You decide where your journey will take you – even in the kitchen: FRANKIA's sophisticated MaxiFlex kitchen gives you the freedom to cook your favourite cuisine with ample space, flexible expansion options and all kinds of practical solutions.





Perfect time

In the FRANKIA TITAN you can turn night into day whenever you like – or vice versa. The bedroom in your luxury liner features high-quality materials and has plenty of light and space for you to relax and take a break from it all. And it's up to you how you want to sleep: In separate beds, in the extra-wide queen-size bed or in the power drop-down bed.



A photograph of a modern shower enclosure. The shower has a glass door with a chrome handle and a chrome showerhead. The vanity is made of wood with a chrome handle. The shower is set in a white bathtub. The background is a light blue wall with a recessed light fixture.

Great freedom

FRANKIA's spa-like bathroom offers you plenty of space and luxurious comfort, just like you're used to at home. Elegant surfaces, high-quality materials, flexible storage space and innovative details make this possible.



Impressive performance

Highlights of the FRANKIA TITAN

The FRANKIA TITAN is the all-rounder among the luxury liners on a Fiat Ducato platform. Choose from five integrated floor plans with a length of eight to nine metres. Whether power drop-down bed, separate beds or extra-wide queen-size bed – it's up to you how you want to live and sleep.



More ground-breaking ideas – thanks to strong partners

Never rest, continue to improve, create something special – this has always been our aim with FRANKIA models on a Fiat Ducato platform with an AL-KO low frame. 37 years ago, today and tomorrow.



Way more storage space

Extra-large rear storage compartment with a height of 1.24 m, FRANKIA double floor (stepless and heated) with a continuous height of 35 cm and many clever storage solutions in the interior



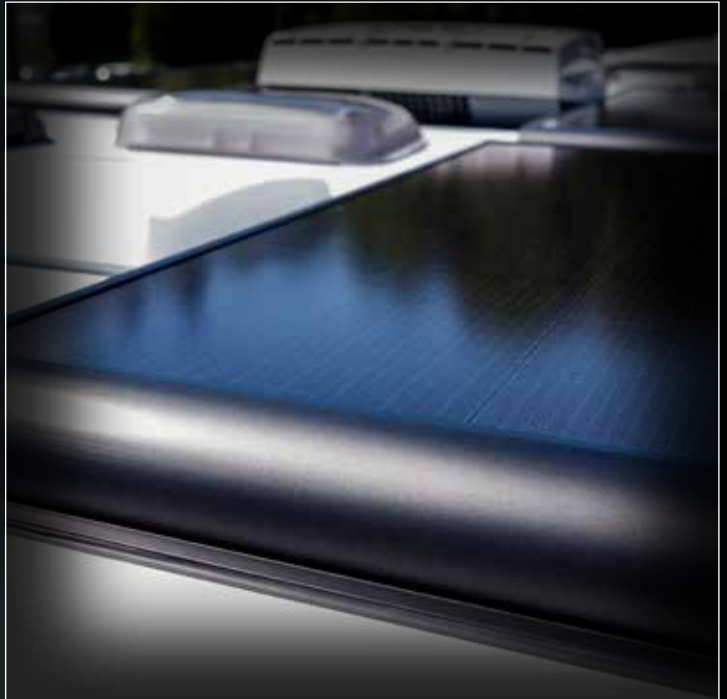
More standard features for maximum comfort

Fully insulated Thermo Guard Plus wall structure with 11-year warranty, Alde Compact hot water heating system, up to 300 l XL fresh water tank



More driving pleasure with Fiat Ducato

All inclusive: New cockpit, 90 l diesel tank, 9-speed automatic gearbox, eco-friendly AdBlue Technology, rear-view camera and much more



More technology for greater independence

Only the FRANKIA TITAN has it: Unique technology package including two 100 Ah LiFePO4 batteries, 2 x 115 W high-performance solar system, 1,700 W sine wave inverter and much more



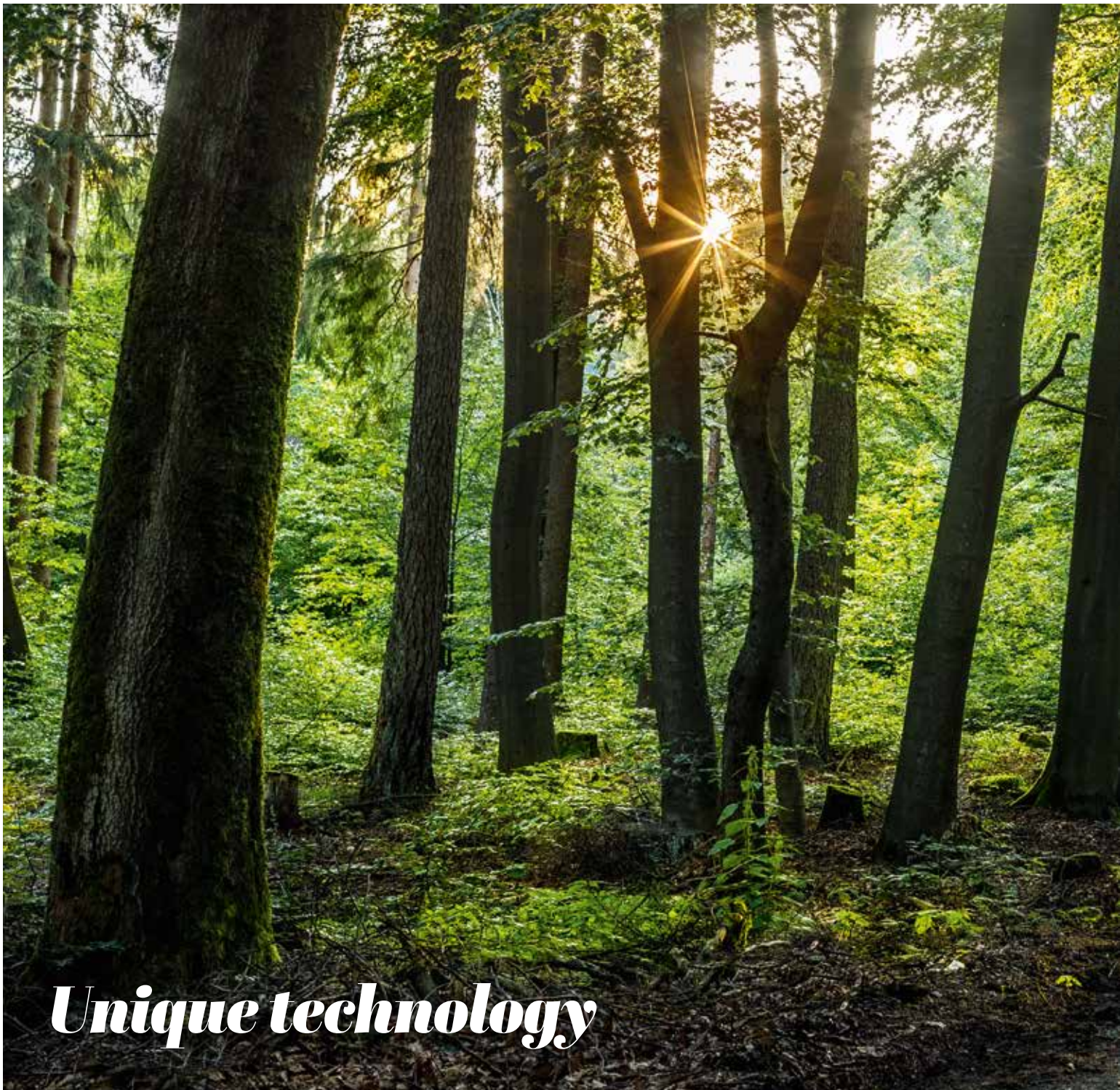
More impressive than ever: Living and travelling in the FRANKIA TITAN I 890

Luxury liner with a length of nearly 9 m, 5.5 t total weight standard and bar-style seating. It's your choice: Separate beds with a length of 2.10 m or 1.60 m wide queen-size bed



More freedom with the next-generation luxury liner: FRANKIA TITAN Next

Enjoy greater independence: FRANKIA's new luxury liner sets new standards in self-sufficiency with the INDUS smart sanitation system



Unique technology

180 hp engine, 9-speed automatic gearbox, cruise control

Fiat Ducato 180 Multijet power: 9-speed automatic gearbox – maximum driving comfort and better utilisation of torque (+5%); also eco-friendlier thanks to standard AdBlue engine (greater efficiency and lower emissions)

2 x 115 W high-performance solar system

Now with even more power – even with little sunshine

1,700 W sine wave inverter

Use 230 V consumers without restrictions; integrated mains priority circuit

CAC smart converter charger

Ensures that your LiFePO4 battery is always charged quickly and safely

2 x 100 Ah lithium battery

State-of-the-art technology: Safe, maximum-capacity LiFePO4 technology



Battery booster

Quick charging of the on-board batteries – even on short trips

Aluminium rims

Standard in the FRANKIA TITAN

5.5 metre awning by THULE

Standard in the FRANKIA TITAN

Battery computer / solar remote display

Always in view: Current power consumption and battery charge

ALDEN satellite system

Always well informed and entertained:
With automatic HD satellite antenna

FRANKIA Thermo Guard Plus

Innovative wall and floor structure
with a wall thickness of 34 mm and
11 year water ingress warranty standard

Next generation

If you thought you'd seen it all, you haven't met FRANKIA. We never settle for less and are always looking for ways to improve our motorhomes so that you can enjoy even more freedom and flexibility on the road. Our new TITAN Next luxury liner takes self-sufficiency to the next level.





The **INDUS** by Thetford now comes standard in the **FRANKIA TITAN Next**. This smart sanitation system is exceptionally hygienic and offers you up to seven days of independence.



The image shows the interior of a motorhome. On the left, there is a curved table with a white top and a grey base. On the table, there is a glass of yellow drink with a lime wedge, a plate of fruit, and a small vase with flowers. Behind the table is a long, dark brown leather bench seat with two patterned pillows. In the foreground, there are two dark brown leather chairs with white stitching and armrests. The walls are covered in light-colored wood paneling with recessed lighting. A window with a white blind is visible in the background.

TITAN *pathfinder*

The new TITAN Next has all the features that make a FRANKIA motorhome a luxury liner: A great foundation and a unique technology package. XL straight kitchen and face-to-face seating. Elegant design and one-of-a-kind solutions. It even goes one step further when it comes to style and innovation with a new bold exterior design and practical details in the interior that you'll only find in the TITAN Next.



Special upgrade

Why settle for less when you can have it all? The FRANKIA TITAN is fully equipped. It already has everything you need to travel self-sufficiently in style in the standard equipment package.

Standard with FRANKIA: Attention to detail – elegant accents around the new queen-size bed

Convincing performance

FRANKIA TITAN standard equipment

790 | 840 | 890

Fiat Ducato chassis

40 Heavy Chassis

Driver and passenger airbag

180 hp

2.2 l Euro VI engine

Traction+ incl. electronic stability control (ESC) and Hill Holder

Hill Descent Control

90 l diesel tank

Smart alternator 220 A

Cruise control

9-speed automatic gearbox

Manual climate control

Multifunction steering wheel

Leather steering wheel and gear shift knob

Steering wheel adjustable in height

Aluminium rims

5.5 t (tandem axle) technically permissible gross weight, 5.5 t – standard in the 890 and TITAN NEXT

Electrical auxiliary chassis heater for faster heating of the interior

AL-KO low-frame chassis

Reinforced front springs

Body

Thermo Guard Plus side walls with 11-year water ingress warranty

GFRP gelcoat white – hail resistant

Full-length, heated double floor with approx. 350 mm height

Central locking for body door and cab door via original vehicle key

Manual rear supports (n/a if optional air suspension ordered)

Power darkening blind

Storage space | Windows | Doors

Storage spaces with LED lighting

LED storage space lighting underneath the seating area

Seitz S7 windows with tinted panes, fly screen and blind, installed flush with the wall

Central supply system with water drum and self-retracting cable reel with 15 m of cable

Fly screen integrated in the door frame and all roof hatches

Beds

Drop-down bed with power adjustment (in A-Class vehicles)

Electrical systems

Inverter 1700 W

2x solar system 115 W with solar remote display, TITAN NEXT: 3x solar system 115 W with solar remote display

MT 350 PP solar controller

MT 5000 iQ control (battery computer)



Central control – easy to see and operate



Power front darkening blind with privacy and sun visor function



Full-length, heated FRANKIA double floor

Convincing performance

FRANKIA TITAN standard equipment



Dimmable LED lighting



24 inch flat screen TV

790 | 840 | 890

2x 100 Ah LiFePO4 batteries (TITAN NEXT: 1x 300 Ah LiFePO4 battery)

Battery booster 40 A

CBE BUS control panel with LCD screen

LED awning light with separate switchable motion sensor

Dimmable LED ambient lighting

Dimmable LED spot lights

LED reading lights

4x 230 V sockets

3 x USB sockets (4 x in A-Class with drop-down bed)

230 V socket in passenger side rear storage compartment

12 V socket in passenger side rear storage compartment

Multimedia | Radio | Satellite system

24 inch flat screen
(32 inch for 890 GD-B/QD-B and TITAN NEXT)

ALDEN satellite system

Hookup for second TV in bedroom 12V/coax socket

Original Fiat 10 inch radio with navigation system

High-quality roof combination antenna UKW/DAB+/GPS

Split rear-view camera with separate monitor

Upholstery | Cushions

Selection of wood/fabric combinations from six different design options

Rear storage compartments | Bike mounts

Rail system for securing cargo
(for high rear storage compartments)

Washroom | Water supply

Approx. 150 l fresh water tank including adjustable 50 l drive load (TITAN NEXT: approx. 250 l)

Approx. 130 l waste water tank
(TITAN NEXT: 105 l + 45 l holding tank)

Ceramic toilet (TITAN NEXT: Thetford iNDUS system)

Second Thetford Cassette (Exception: TITAN NEXT)

Air conditioning | Heating

Alde fan

Alde heat exchanger

Alde Compact 3030 hot water heating system

Duo Control for gas cylinders

Kitchen | Refrigerator | Hob

FRANKIA MaxiFlex kitchen: Uniquely functional modular kitchen featuring a high-end HPL worktop with expandable surface

TecTower 10, opens on both sides

Awnings

Thule 5.5 m awning; awning housing in anthracite



Awning - with optional integrated LED lighting profile



Self-retracting cable reel with 15 m of cable and central supply system



A number of practical USB sockets







Adjustable rear and side flaps



Free choice

The FRANKIA TITAN has the right floor plan for you. It's up to you how you want to live and travel.



	Approx. length of motorhome
	Maximum permissible laden weight
	Sleeping berths
	Seats with seatbelts
Standard/optional	

I 790



I 790 GD TITAN

7.9 m 5.5 t 4 4/5



TITAN NEXT

7.9 m 5.5 t 4 4

I 840



I 840 GD TITAN

8.4 m 5.5 t 4/6 4/5

I 890



I 890 GD-B TITAN

8.9 m 5.5 t 4 4



I 890 QD-B TITAN

8.9 m 5.5 t 4 4



FRANKIA is a PILOTE Group company

FRANKIA-GP GmbH

Bernecker Straße 12 | 95509 Marktschorgast | Germany

Phone: +49 (0)92 27 738-0 | Fax: +49 (0)92 27 738-49

Email: info@frankia.de

Experience the world of FRANKIA online:

www.frankia.com

